

# 2 Pin Strip to Strip Clamp Connector

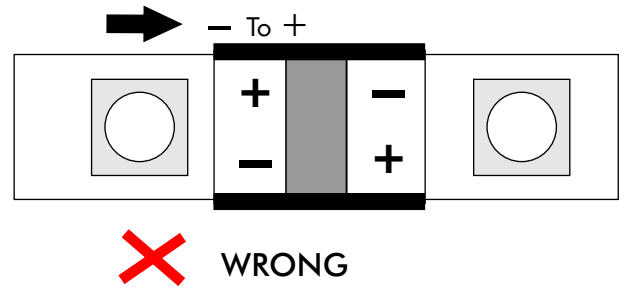
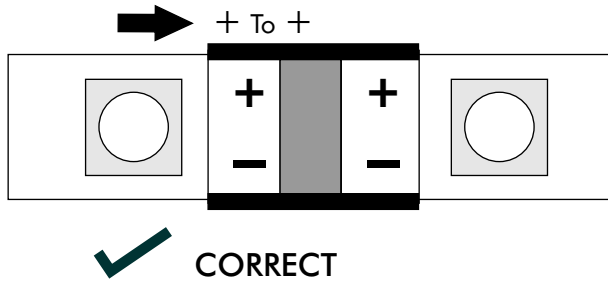
Model: CL10BB-2G

**CAUTION: Max 5 Amps 12/24VDC (low voltage). Use only with Class 2 power supply. Indoor dry location use.**

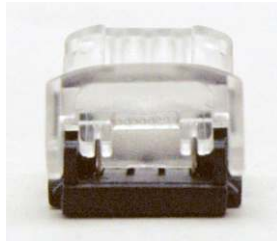
**ATTENTION: Utiliser seulement avec la classe 2 bloc d'alimentation.**

For use only with LED World's type A (IP20) 12VDC and 24VDC 10mm wide LED Flex Strips. Not to be used with Type B or C (Strips that have covers or coatings).

**IMPORTANT NOTE: Check the Polarity and make sure that connector contact points are directly over (and centered) the LED Flex Strip connector pads. Do not connect LED strips at soldered contact points.**

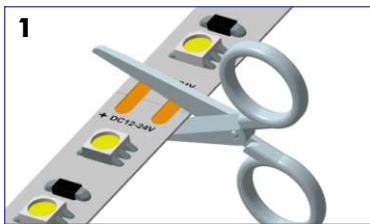


## CONNECTOR ENDS

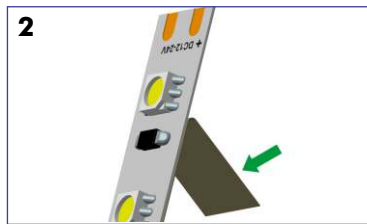


Strip Connection End

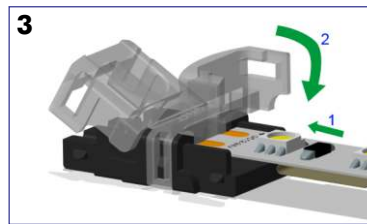
## INSTALLATION STEPS



1 Cut the LED Strips at the cut mark (pads)



2 Remove the wax paper from back of the LED Strips



3 Push both LED Strips into contact points over pads. Close the caps gently



4 Complete the LED Strip connections using pliers. Make sure cap is locked at base of connector.



5 Test Connection